

no. 4.2008

World One

International Watch & Jewellery Journal

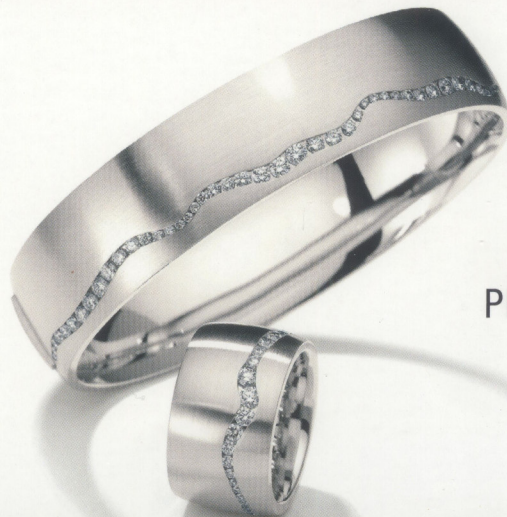


PURE BEAUTY:
Brazilian design
conquers the world



PURE GENIUS:
The AHCI and its
innovations

PURE COLOUR:
White gold for autumn



PURE LUXURY:
Platinum design
perfection

The Sarlat by Philippe Wurtz features a display of the hours which is uniquely incorporated into the V-shaped plate.

Time and space

Living, experiencing and relaxing are easy when you feel at home. Soft light, warm colours, tasteful furniture and clocks create a unique homely atmosphere. It is a question of lifestyle.

ON MOBILE PHONES, radio alarm clocks, computers, microwaves – everywhere there are displays telling us “tempus fugit”. Grandfather clocks, table clocks and wall clocks seem to counterbalance this in the everyday life of most people, as delightful yet anachronistic relicts from past centuries when the world turned more slowly. In today’s hectic world, people are re-discovering the traditional living room clock in their search for simplicity and old world ease. These clocks create a unique and homely atmosphere where you can unwind and watch time pass in a more relaxed manner. Modern design, sophisticated materials and exquisite craftsmanship have certainly eradicated the preconception that large clocks are old-fashioned. They have become special living accessories in their own right as technical and artistic design pieces. And as a product of

clock-making craftsmanship, they stand for precision and durability.

Tradition and modernity

Kieninger clocks from Aldingen in Southern Germany have a long-standing tradition in precision clocks. The company was founded in the Black Forest in 1912 and is now renowned throughout the world for its grandfather clocks, wall clocks and table clocks. The mechanical movements offer special technical and clock-making features, some of which are patent-protected, as the special self-winding mechanism for beat adjustment, an automatic night-time shut-off function for the chimes and strikes and an automatic melody change within the chime mechanism. The current generation of models includes a tasteful wall clock produced in collaboration with young Austrian designer David Pompa.

This clock is restricted to 250 models and is presented in a case with polished aluminium components which contrast well against black wooden elements. An opening in the enamel clock face highlights the components of the quiet Graham escapement. The clock is fitted with a mechanical caliber PS064 as well as a chiming cable movement which chimes on the half hour on a coiled gong. As with other models from this company, the chiming mechanism halts between 10 p.m. and 7 a.m. thanks to the automatic night shut-off function.

Unique among its kind

Manufacturer of grandfather clocks Erwin Sattler from Gräfelfing near Munich has extensive experience in creating precision pendulum clocks. Clock lovers from all over the world value these intricate

chapter in the history of clock-making, namely the development of the carriage clock. Due to their compact size, these table clocks were particularly popular in the early nineteenth century as travel clocks. The 20 x 20 casing in macassar wood functions as the clock face and features four prominently placed Roman numerals. An opening at the centre holds the mechanical movement with its artistically designed gilt gear wheels.

Small but sophisticated

In addition to the larger renowned manufacturers, there are also various independent manufacturers which have special-

ised in producing large clocks. They create pieces with an immaculate attention to detail and a great deal of craftsmanship, right from the smallest cog to the hands. One of them is Matthias Naeschke from Haigerloch. This master clockmaker and artist produces high-quality grandfather clocks and is renowned for being adept at the art of crafting mechanical organ clocks, a skill which has virtually died out. These delightful mechanical timepieces produce melodies upon request thanks to a miniature organ system contained within. The company also produces table organ clocks with seventeen different pitches. The mechanical movement is fitted with a constant power regulator. After striking the

hour with a large bell, the organ movement starts up and plays one of six compositions. Four delicately cut and faceted viewing glasses on three sides of the case offer an insight into the movement, including the striking of the bell and rotating barrel.

The independent clock-maker Philippe Wurtz also hails from Germany. His complicated precision pendulum clocks are striking in every respect, both in terms of their craftsmanship and aesthetics; all of the components are laboriously produced and refined by hand. Thanks to a skeletonised construction, the planetary gears with gold cogs and Geneva cut decorative plates can be viewed from all

The Sarlat (13.5 x 27 x 17 cm) by Philippe Wurtz brings the mechanism back into the foreground.

The Pallas Athene (87 x 28 x 16 cm) by Kieninger was designed in collaboration with designer David Pompa.



The Single Train Clondiffe Clock (60 x 32 x 16 cm)

by Sinclair Harding: the movement rests on a base of specially selected precious wood and brass. A glass case protects the valuable mechanism from dust (cannot be seen).

sides. The new Sarlat wall clock is a precision pendulum clock with a regulator dial. The separate functions are assumed by a delicate second hand and striking minute hand. The hours are shown as three-dimensional markers. The special thing about the Sarlat is its hanging movement in the form of a V. The special construction, ball-bearing pivots and diamond-coated pinions mean that the gravity escapement does not require oil or lubrication.

A small English clockmaker made a name for itself by constructing the Sea Clock, dedicated to the ingenious watchmaker and inventor of the ship chronometer, John Harrison. The team of Sinclair Harding from West Yorkshire produces artistic table and mantel clocks, all by hand and mostly with skeletonised working throughout. Plates are cut from solid brass and the edges beveled. The surfaces are then delicately processed and gold-plated. The new Single Train Clondiffe Clock is limited to three models. This pendulum clock with an 8-day power reserve reflects the English art of clock-making of the nineteenth century. The fully transparent workings of the pendulum clock offer an unrestricted view of the interlocking cogs and pinions, thereby demonstrating an elegant passage of time. ■

[Sabine Zwettler]

